



SHANVI ENTERPRISES

WIT-COLOR EPSON Printhead 1.7M Eco-Solvent Printers

2400 DPI I3200-EI PRINT HEAD



WIT-COLOR ULTRA 1702S



New Control System



Carbon Fiber Drying+Fans



P.H. Anti-collision System



i3200-E1 Print Head



Full Alloy Printhead Maintenance Station



Alloy Rail Beam

Print Head Epson i3200 E-1

WIT-COLOR Ultra 9100 1602S 1.7M ECO - SOLVENT PRINTER							
PRINTING SPEED	1 HEAD	3PASS	32 sqm/h	2 HEAD	3PASS	64 sqm/h	
		4PASS	24 sqm/h		4PASS	48 sqm/h	
		6PASS	16 sqm/h		6PASS	32 sqm/h	
PRINTING WIDTH	1.52 m		INK TYPE	CMYK- ECO-SOLVENT INK / WATER BASED INK			
MEDIA	MEDIA PROCESSING	ROLL TO ROLL + AUTO FEEDING + AUTO ROLL UP					
	MEDIA HEATING	PRE & POST - MEDIA HEATING					
	MEDIA TYPE	OUTDOOR ECO - SOLVENT & SOLVENT BASED ROLL MEDIA					
IMAGE FORMAT	TIFF,JPG,EPS,PDF			RIP SOFTWARE	MAINTOP (STANDARD)		
POWER	AC 220V,50HZ+10%,UPS REQUIRED , 3000W			PACKING SIZE	L/W/H: 290*70*110CM , G.W/N.W : - 340 KG/290 KG		
PC CONFIGURATION	SYSTEM - WINDOW 7 64 BIT, CPU :- INTEL i5 / i7 , RAM 4GB / 8GB HARD DISK : 500GB						



SHANVI ENTERPRISES

WIT-COLOR EPSON Printhead 1.7M UV Printers



Bulk Ink Supply System

LED Stripe

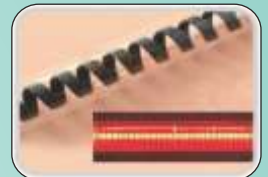
P.H. Station

Media Pressing Handle

Dual Motors Media Take-up System



New Control System



Carbon Fiber Drying+Fans



P.H. Anti-collision System



i3200-E1 Print Head



Full Alloy Printhead Maintenance Station



Alloy Rail Beam



8 Advantages to be together with Wit-Color Division Innovation

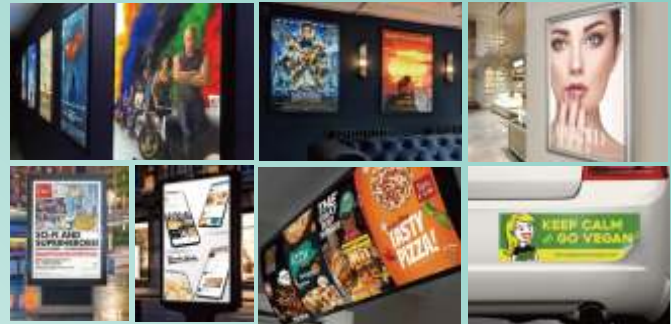
- Industry Advantage: Low investment, low PMA, High Yield, Good Sustainability, Optimal Industry for Investment
- Basic Advantage: Full 20 Pin, 20 Passes to 2 Colors, 4 Colors, 6 Colors, 8 Colors, 10 Colors, 12 Colors, 14 Colors, 16 Colors, 18 Colors, 20 Colors
- Printing Advantage: High Quality, Eco-Friendly, Efficient, Quiet, Running Quietly
- Low Investment: Full 20 Pin, 20 Passes to 2 Colors, 4 Colors, 6 Colors, 8 Colors, 10 Colors, 12 Colors, 14 Colors, 16 Colors, 18 Colors, 20 Colors
- High Resolution: 3200 DPI, High Resolution, High Quality, High Yield, High Speed, High Efficiency, High Reliability, High Durability, High Performance, High Stability, High Accuracy, High Precision, High Consistency, High Uniformity, High Contrast, High Saturation, High Brightness, High Contrast, High Saturation, High Brightness, High Contrast, High Saturation, High Brightness
- Wide Application: Full 20 Pin, 20 Passes to 2 Colors, 4 Colors, 6 Colors, 8 Colors, 10 Colors, 12 Colors, 14 Colors, 16 Colors, 18 Colors, 20 Colors
- Wide Application: Full 20 Pin, 20 Passes to 2 Colors, 4 Colors, 6 Colors, 8 Colors, 10 Colors, 12 Colors, 14 Colors, 16 Colors, 18 Colors, 20 Colors
- Wide Application: Full 20 Pin, 20 Passes to 2 Colors, 4 Colors, 6 Colors, 8 Colors, 10 Colors, 12 Colors, 14 Colors, 16 Colors, 18 Colors, 20 Colors



WIT-COLOR ULTRA 1702S		1.7M UV ROLL TO ROLL PRINTER				
PRINTING SPEED	1 HEAD	3PASS	32 sqm/h	2 HEAD	3PASS	64 sqm/h
		4PASS	24 sqm/h		4PASS	48 sqm/h
		6PASS	16 sqm/h		6PASS	32 sqm/h
PRINTING WIDTH	1.52 m	INK TYPE		CMYK & WHITE		
MEDIA	MEDIA PROCESSING	ROLL TO ROLL + AUTO FEEDING + AUTO ROLL UP				
	MEDIA HEATING	PRE & POST - MEDIA HEATING				
	MEDIA TYPE	OUTDOOR ECO - SOLVENT & SOLVENT BASED ROLL MEDIA				
IMAGE FORMAT	TIFF, JPG, EPS, PDF		RIP SOFTWARE	MAINTOP (STANDARD)		
POWER	AC 220V, 50HZ + 10%, UPS REQUIRED, 3000W		PACKING SIZE	L/W/H: 290*70*110CM, G.W/N.W :- 340 KG/290 KG		
PC CONFIGURATION	SYSTEM - WINDOW 7 64 BIT, CPU :- INTEL i5 / i7, RAM 4GB / 8GB HARD DISK :- 500GB					

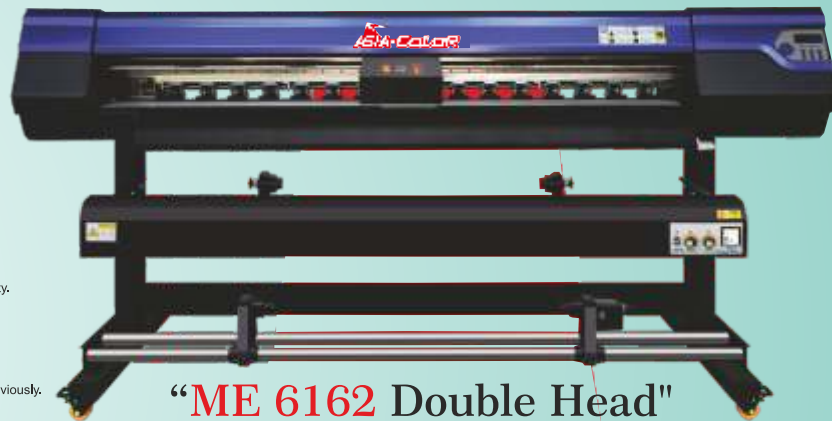


SHANVI ENTERPRISES



FUNCTIONS AND FEATURES

- * **EPSON PRINTHEAD**
Adopting EPSON micropiezo printhead, variable droplet technology, high resolution output.
- * **LEADSHINE MOTOR**
Leadshine motor, high resolution driver linear encoder, higher resolution, fewer errors in length, more stable running.
- * **ADJUSTABLE VOLTAGE**
Jet voltage is adjustable independently to eliminate ink mist or nozzle missing caused by variable ink quality.
- * **DATA RECONNECTION**
The function can avoid the waste job caused by data transmission break.
- * **INTELLIGENT FEATHER & FOG FUNCTION**
Unique 2D intelligent feather and fog function, eliminating banding effectively in printing, improving printing quality obviously.



TECHNICAL PARAMETERS

Printhead :- i3200-E1 (2 head)			
Resolution & Number of nozzles: 3200DPI, & 3200(8*400)			
Printing speed : 3 Pass - 300/600 SQFT, 4 Pass - 200/400 SQFT, 6 Pass - 150/300 SQFT			
Printing width : 1600mm, Media width : 1720mm, Colors : CMYK,			
Ink type: water-based ink, Eco-solvent based, sublimation dye ink			
Color management : ICC based, density & curves adjustment			
* Rip software : maintop, computer system : win7,win8,win10			
Data Transmission Port: Giga-bit Ethernet Port			
Power supply: 50HZ/60HZ, 220V, 10A			
Heating system : front bed, rear body heaters, extra dryer			
File forms: bmp,tif,jpg,pdf-etc			
Feeding method:	Roll to Roll; Leaf	Humidity :	35%-65%
Machine size:	2502*842*1240mm	weight	200KG
PACKAGE SIZE :	2680*860*750MM	weight:	240 KG



SHANVI ENTERPRISES



SC-4180TS

[EPSON I3200-A1/E1 PRINTHEAD]



FUNCTIONS AND FEATURES

- * **EPSON PRINTHEAD**
Adopting EPSON micropiezo printhead, variable droplet technology, high resolution output.
- * **LEADSHINE MOTOR**
Leadshine motor, high resolution driver linear encoder, higher resolution, fewer errors in length, more stable running.
- * **ADJUSTABLE VOLTAGE**
Jet voltage is adjustable independently to eliminate ink mist or nozzle missing caused by variable ink quality.
- * **DATA RECONNECTION**
The function can avoid the waste job caused by data transmission break.
- * **INTELLIGENT FEATHER & FOG FUNCTION**
Unique 2D intelligent feather and fog function, eliminating banding effectively in printing, improving printing quality obviously.

- 📍 **Head Office:**
2055-56/6, Chunamandi, Paharganj
New Delhi - 110035
- 📍 **Branch Office:**
PO 148-149, Kamta, Aslam Vihar Colony
Chinahat, Lucknow, UP - 226028
- 📞 **Mob.:** 8800 986 880, 6306027491, 011-42487693
- ✉ **manvienterprises74@gmail.com**

TECHNICAL PARAMETERS

Printhead :- i3200-E1 (2 head)			
Resolution & Number of nozzles: 3200DPI, & 3200(8*400)			
Printing speed : 3 Pass - 600 sqft, 4 Pass - 400 sqft, 6 Pass - 300 sqft			
Printing width : 1800 mm, Colors : CMYK,			
Ink type: water-based ink, Eco-solvent based, sublimation dye ink			
Color management : ICC based, density & curves adjustment			
* Rip software : maintop, computer system : win7,win8,win10			
Data Transmission Port: Giga-bit Ethernet Port			
Power supply: 50HZ/60HZ, 220V, 10A			
Heating system : front bed, rear body heaters, extra dryer			
File forms: bmp,tif,jpg,pdf-etc			
Feeding method:	Roll to Roll; Leaf	Humidity :	35%-65%
Machine size:	2793*840*1330mm	weight	280KG
PACKAGE SIZE :	2920*940*980MM	weight:	330KG



SHANVI ENTERPRISES



“GD-1601S ECO”

Grando Eco Solvent Ink



“GD-1601UV”

I3200-U1



CMYK

GD-1601S (CMYK) :

4pass:720x1200dpi	21m sqm/h
6pass:720x1800dpi	15m sqm/h
8pass:720x2400dpi	

GD-1601UV (CMYK) :

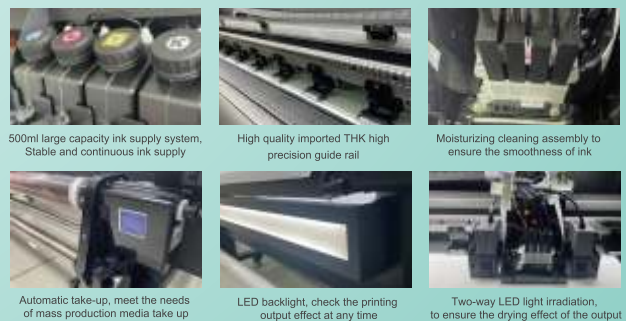
4pass:720x1200dpi	11m sqm/h
6pass:720x1800dpi	8m sqm/h
8pass:720x2400dpi	6m sqm/h

• Technical Specifications

Model	GD-1601S	
Print Head	Piezoelectric Inkjet	
Printing Technology	Width	210-1630 (mm)
	Thickness	Maximum 39.3 mil (1mm)
	Weight	
Acceptable Media	Width	63 in.(1600 mm)
	Thickness	
	Weight	
Printing Width	63 in.(1600 mm)	
Ink Cartridges	Type	Bulk ink supply system with 1.5L ink tank
	Ink Supply	CMYK
	Color	
Printing Resolution	Maximum 2400 dpi	
Interface	Ethernet	
Power Supply	AC	220V ± 10%, 50/60 HZ
	Dimensions(with stand)	100(W)x31(D)x59(H) in. 2550(W)x800(D)x1500(H) mm
Weight(with stand)	250 kg	
Packing Size	104(W)x30(D)x35(H) in. 2640(W)x760(D)x880(H) mm	
Packing Weight	661 lb. (300 kg)	
Environment	Power on	Temperature: 59 ℉ to 90 ℉ [15 ℃ to 32 ℃] / Humidity: 35 to 80% (no condensation)
	Power off	Temperature: 41 ℉ to 104 ℉ [5 ℃ to 40 ℃] / Humidity: 20 to 80% (no condensation)

• Technical Specifications

Model	GD-1601UV	
Print Head	Single I3200-U1 Print Heads(I1600-U1 Optional)	
Printing Technology	Width	63.7 in.(1620 mm)
	Thickness	Maximum 59 mil(1.5 mm)
	Weight	176 lb.(80 kg)
Acceptable Media	Width	63 in.(1600 mm)
	Thickness	
	Weight	
Printing Width	63 in.(1600 mm)	
Ink Cartridges	Type	UV Ink
	Ink Supply	Bulk ink supply system with 1.5L ink tank
	Color	CMYK
Printing Resolution	Maximum 2400 dpi	
Speed	CMYK	4pass (720*1200dpi) 11 m ² /h 6pass (720*1800dpi) 8 m ² /h
Curing Unit	Wind-cooling UV lamp	
Interface	Ethernet	
Power Supply	AC 220V ± 10%, 50/60 HZ	
Dimensions(with stand)	102(W)x30(D)x62(H) in. (2600(W)x680(D)x1580(H) mm)	
Weight(with stand)	617 lb. (280 kg)	
Packing Size	110(W)x30(D)x30(H) in. (2800(W)x760(D)x760(H) mm)	
Packing Weight	661 lb. (300 kg)	
Environment	Power on	Temperature: 59 ℉ to 90 ℉ [15 ℃ to 32 ℃] / Humidity: 35 to 80% (no condensation)
	Power off	Temperature: 41 ℉ to 104 ℉ [5 ℃ to 40 ℃] / Humidity: 20 to 80% (no condensation)





SHANVI ENTERPRISES

i3200-E1
Print Head



GD-1602S Eco Solvent Printer

Our range of wide format inkjet printers matches our knack for engineering and quality with your desire for impeccable performance and careless production. You can produce roll-to-roll indoor prints and long term outdoor signs. Wide applications in light box posters, customized car stickers, background wall cloth, label printing, advertising sign, subway advertising, shopping mall advertising signs etc.



Technical Specifications

Model	GD-1602S	GD-1604S
Print Head	Two i3200-E1 Print Heads	Four i3200-E1 Print Heads
Printing Technology	Piezoelectric head	
Acceptable Media	Width	210-1600 (mm)
	Thickness	Maximum 38.3 mil (1 mm)
Printing Roll	Weight	152 lb (68 kg)
	Width	210-1600 (mm)
Ink Cartridges	Type	Eco Solvent Ink
	Capacity	Continual Ink Supply System (1.5L ink tank)
Printing Resolution	Cuts	4 colors (Cyan, Magenta, Yellow, Black)
	Maximum	2400 dpi
Printing Speed	4pass/350x2400dpi	43 sq/hrs
	4pass/720x1800dpi	82 sq/hrs
	4pass/720x1800dpi	21 sq/hrs
	4pass/720x1800dpi	43 sq/hrs
Media Heating System	Integrated post heater & infrared Dryer & Fan system	
Interface	Ethernet interface	
Power	1500W	
Power Supply	AC 220V ± 10%, 50/60 Hz	
Dimensions with stand	159Wx413Dx899H in. (3018Wx10482x1430H) mm	
Weight with stand	891 lb (400 kg)	
Package Dimensions	124Wx413Dx899H in. (3148Wx10482x1430H) mm	
Package Weight	771 lb (350 kg)	
Environment	Power on	Temperature: 59°F to 80°F (15°C to 32°C) / Humidity: 20 to 80% (no condensation)
	Power off	Temperature: 41°F to 104°F (5°C to 40°C) / Humidity: 20 to 80% (no condensation)
Accessories	USB cable, media comp. manual, spare bottle, ink cartridge, RIP software etc.	



Printer carriage can be moved up and down to adjust print head height



Stable 3L bulk system ensures amazing printing speed



Head cleaning and moistening makes operation and maintenance more convenient



Built-in infrared heater and cooling fan to accelerate the drying of the media



High quality DC servo motor has good stability and long service life



Three stage heating system including pre-heater, print heater, and rear heater and platform vacuum system with adjustable power



Three-fool pinch roller structure brings more stable feeding accuracy



External power supply, intelligent rolling system



SHANVI ENTERPRISES

grando 根道



GDK 512i Flex Printing Machine



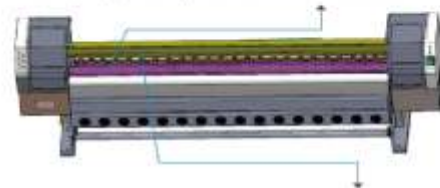
- Upgraded printer structure makes high speed stable printing available.
- New design leaves room for computer.
- 400W high power Panasonic motor leads high speed printing to be more stable.

Eight Konica 512i Print Heads (A)	2pass (360*360dpi)	260sqm/h
	3pass (360*540dpi)	180sqm/h
Eight Konica 512i Print Heads (B)	2pass (480*360dpi)	210sqm/h
	3pass (480*540dpi)	140sqm/h
Eight Konica 512i Print Heads (B)	2pass (360*360dpi)	220sqm/h
	3pass (360*540dpi)	140sqm/h
Eight Konica 512i Print Heads (B)	2pass (480*360dpi)	170sqm/h
	3pass (480*540dpi)	100sqm/h

• Technical Specifications

Model	GDK-6128(A)	GDK-6128(B)	GDK-6128(C)	GDK-6128(D)
Print Head	4 Konica 512i Heads	8 Konica 512i Heads	4 Konica 512i Heads	8 Konica 512i Heads
Printing Technology	Piezoelectric Inkjet			
Acceptable Media	Width	126.4 in (3213 mm)		
	Thickness	Maximum 76.7 mil (2 mm)		
	Weight	176.5 (395 kg)		
Feeding Width	126 in (3200 mm)			
Ink Cartridges	Type	Solvent Ink		
	Capacity	Continual Ink Supply System (SIS) Bottle (in.)		
	Color	4 colors (Cyan, Magenta, Yellow, Black)		
Printing Resolution	Maximum 720 dpi			
Speed (360*360dpi)	220sqm/h	120sqm/h	110sqm/h	220sqm/h
Speed (360*540dpi)	180sqm/h	80sqm/h	70sqm/h	170sqm/h
Speed (480*360dpi)	210sqm/h	110sqm/h	80sqm/h	140sqm/h
Speed (480*540dpi)	140sqm/h	80sqm/h	80sqm/h	100sqm/h
Media Heating System	Integrated to feeder system			
Interface	USB 2.0			
Power Supply	AC 220V ± 10%, 50/60 Hz			
Dimensions (with stand)	192(W) x 43(D) x 103(H) in. (4880(W) x 1100(D) x 1653(H) mm)			
Weight (with stand)	1867 lb. (850 kg)			
Package Dimensions	Entirety Packing : 192(W) x 43(D) x 119(H) in. (4880(W) x 1100(D) x 1810(H) mm) Spare Packing : 189(W) x 32(D) x 144(H) in. (4776(W) x 813(D) x 1158(H) mm)			
Package Weight	1867 lb. (850 kg)			
Extension	Power on	Temperature: 59°F to 90°F (15°C to 32°C) / Humidity: 35 to 65% (no condensation)		
	Power off	Temperature: 41°F to 104°F (5°C to 40°C) / Humidity: 30 to 85% (no condensation)		
Accessories	USB cable, media clamp, manual, ink cart-edges, RIP software, etc.			

The print platform precision is 3300mm±0.1mm.



The THK guide rail precision is 4400mm±0.1mm.



Integrated structure makes higher take up, feeding accuracy.

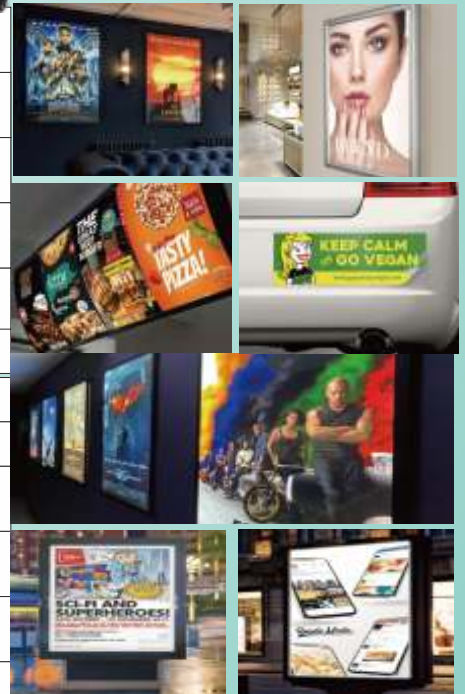


SHANVI ENTERPRISES

(I3200-E1 & Xp600 Eco Solvent Printer)



MODEL NO.	(ME i3200-E1 & XP600)	
PRINT HEAD	(Epson i3200-E1 & XP600)	
COLOR	CMYK	
PRINTING WIDTH	1.9 METER	
INK TYPE	ECO SOLVENT / SUBLIMATION INK / WATER BASED INK	
PRINTING SPEED	4PASS:-	200 sqft/h
	6PASS:-	150 sqft/h
	8PASS:-	110 sqft/h
DATA TRANSFER	LAN INTERFACE	
RIP SOFTWARE	MAINTOP 5.3/ (ORIGINAL MAINTOP EXTRA CHARGE 6.0)	
POWER	, MAXIMUM POWER:-	1800W
OPERATING SYSTEM	, WIN 7 , WIN 8	
HEATING SYSTEM	FRONT AND BACK-SIDE HEATING SYSTEM	
MACHINE SIZE	114"29"25" inch	





SHANVI ENTERPRISES



“UV Single head”



“UV Double head”

MODEL NO.	(UV i3200-U1)
PRINT HEAD	(Epson i3200-U1)
COLOR	CMYK
PRINTING WIDTH	1.9 METER
INK TYPE	ECO SOLVENT / SUBLIMATION INK / WATER BASED INK
PRINTING SPEED	4PASS:- 200 sqft/h
	6PASS:- 150 sqft/h
	8PASS:- 110 sqft/h
DATA TRANSFER	LAN INTERFACE
RIP SOFTWARE	MAINTOP 5.3/ (ORIGINAL MAINTOP EXTRA CHARGE 6.0)
POWER	, MAXIMUM POWER:- 1800W
OPERATING SYSTEM	, WIN 7 , WIN 8
HEATING SYSTEM	FRONT AND BACK-SIDE HEATING SYSTEM
MACHINE SIZE	114”29”25” inch

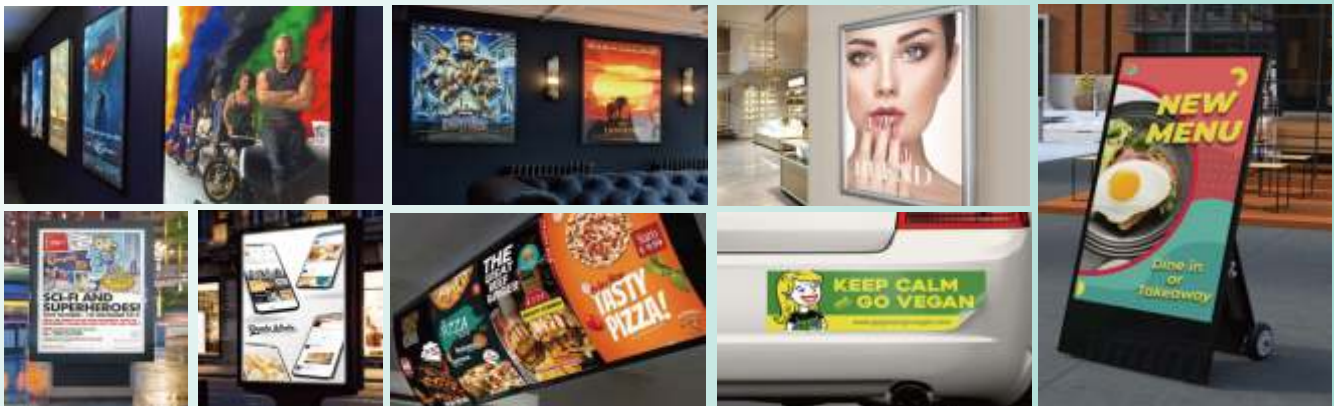


SHANVI ENTERPRISES

SE EPSON Printhead 2X3 feet UV Flatbed



**PRINT HEAD
TX800**



Print Head: TX-800

Head total: 3 Pcs

Printing Size: 900*600

Print Resolution: 360*1080dpi, 720*720dpi, 720*1080dpi, 720*1440dpi

Printing Speed: 3-12 sqm/h

Operation Environment: Temperature 20 to 30 c, humidity 40 to 60 c



SHANVI ENTERPRISES

CNC Router :-1325 / 1530



(Technical Specification)

Lathe Bed	Welded
XYZ GUIDE RAIL	Square Rail
X Y TRANSMISSION	Rack Gears
Z TRANSMISSION	Ball Screw
Spindle Motor	3.5/6kw (Single & three phase)
Inverter	BEST
Operating System	NK105-G2
Typeset Software	ARTCAM
Motor & Driver	Step Motor & Leadshine Drivers
Blades	one set of woodwokin blades
Table	PVC with clamps
Table Size	1460*2900 mm
Working Travel (XYZ)	1300*2500*200 (mm)



DUST COLLECTOR
EXTRA CHARGE

Laser Cutting Machine (Size:-1390,1410,1325)



Laser Model No:1390 & 1410



Laser Model No:1325



Laser Model No:1390



Technical specification of machine

- 1) Model : 1390 & 1410
- 2) laser tube type (EFR F4 & F6)
- 3) control board (top wisdom & RD controllar)
- 4) Guide system : CRO type bearings model
- 5) Driving Mode : control by wattage & speed
- 6) control board power supply 24v mean well
- 7) motion : X Y, 2 axis stepper motor drives
- 8) exhaust type: with Blower Fan 550w
- 9)chiller type: C5200 for industrial uses

Technical specification of machine

- 1) Model : 1325
- 2) laser tube type (EFR F6)
- 3) control board (RD controllar)
- 4) XY guide rail : square rail
- 5) XY Transmission : Rack & Gears
- 6) control board power supply 24v mean well
- 7) motion : X Y, 2 axis stepper motor drives
- 8) exhaust type: with Blower Fan 550w
- 9)chiller type: C5200 for industrial uses



SHANVI ENTERPRISES



Head Office:

2055-56/6, Chunamandi, Paharganj New Delhi - 110035



Branch Office:

PO 148-149, Kamta, Aslam Vihar Colony Chinahat, Lucknow, UP - 226028



Mob.: 8800 986 880, 6306027491, 011-42487693



shanvienterprises051993@gmail.com